



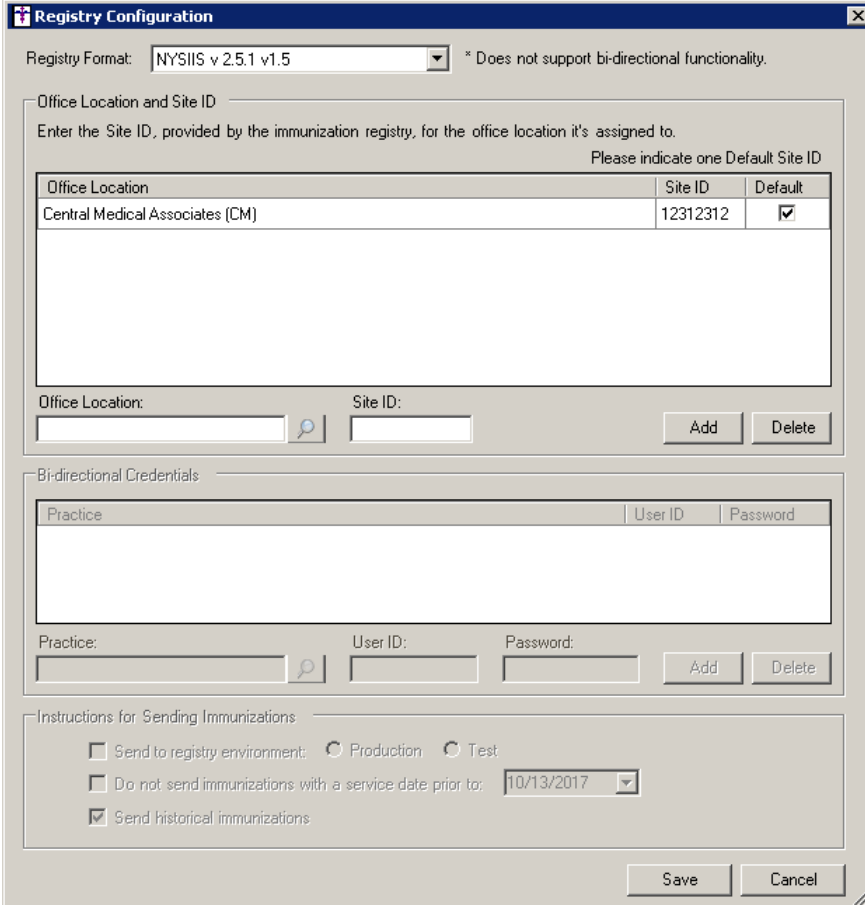
ChartMaker® Practice Manager Release Notes

ChartMaker® 2016 (fv6.2.5)

Please note that the ChartMaker Medical Suite can no longer be installed on computers using the Windows XP or Windows 2003 Server operating system. Since Microsoft has discontinued support for Windows XP in April 2014, and Windows 2003 Server in July 2015, we can no longer guarantee the stability of computers using this operating system, and recommend that you upgrade the operating system on any computers currently using Windows XP or Windows 2003 Server.

Administration

- **Administration – Registries – Immunization – Configuration** – The **Registry Format** field in the Registry Configuration dialog (**Administration > Registries > Immunization > Configuration**), has been updated with a **NYSIIS v 2.5.1 v1.5** option, allowing you to configure office location and Site ID information for sending immunization files to the NYSIIS registry in the NYSIIS HL7 2.5.1 v1.5 format. See Figure 1.



The Registry Configuration dialog box is shown with the following details:

- Registry Format:** NYSIIS v 2.5.1 v1.5 (dropdown menu)
- Office Location and Site ID:** Enter the Site ID, provided by the immunization registry, for the office location it's assigned to. Please indicate one Default Site ID.

Office Location	Site ID	Default
Central Medical Associates (CM)	12312312	<input checked="" type="checkbox"/>
- Bi-directional Credentials:** Practice, User ID, Password (table with input fields and Add/Delete buttons)
- Instructions for Sending Immunizations:**
 - Send to registry environment: Production Test
 - Do not send immunizations with a service date prior to: 10/13/2017 (dropdown)
 - Send historical immunizations

Buttons: Save, Cancel

Figure 1 – Registry Configuration

Clinical

- **Clinical – Immunization** – The program has been updated with the ability to generate an immunization file in the **NYSIIS HL7 2.5.1 v1.5** format for submission to the NYSIIS registry.

General

- **External Devices – PCVaccine** – The **Format** field in the Vaccine Registry dialog has been updated with a **NYSIIS v 2.5.1 v1.5** option, allowing you to generate an immunization file in the **NYSIIS HL7 2.5.1 v1.5** format for submission to the NYSIIS registry. See Figure 2.

STI ChartMaker Medical Suite Practice Manager - Vaccine Registry

File View Tools Help

Format: **NYSIIS v 2.5.1 v1.5**

Practice: 1 **Central Medical Associates**

Provider:
* leave blank for all Providers

Facility: 1 **STI Computer Services, Inc**

Starting Date: 4/11/2014

Ending Date: 9/16/2014

Output Directory: C:\Users\philliker\Desktop

File Name: TODAY.HL7

[Procedure selection is not required for version 2.5.1]

Ready NUM

Figure 2 – Vaccine Registry

Patient

- **Patient – Other – Consent** – The **Registry Name** field, in the Immunization section of the Consent dialog, has been updated with a **NYSIIS v 2.5.1 v1.5** option, allowing you to configure consent information for sending immunization files to the NYSIIS registry in the NYSIIS HL7 2.5.1 v1.5 format. See Figure 3.

Figure 3 – Consent

- **Patient – Case – Hospitalization** – The system has been updated so whenever a patient has been discharged in ChartMaker Mobile, the **Discharge Date** will be automatically updated for the corresponding entry in the Patient Hospitalization dialog.

Addendum

Insurance Billing Updates Reminder

In the version 4.1 release of Practice Manager, there was an important enhancement that was made to the Insurance Billing screen to alert you whenever a new insurance billing update is available. Once alerted you can then download these updated billing components at your convenience. **Do note that if you are running the 4.1 version of Practice Manager, the update process needs to be performed on the server.**

In the version 4.2 release of Practice Manager, the system was updated so that billing components reside on each individual workstation. **Therefore, if you are running the 4.2 version or higher of Practice Manager, the update process (described below) will need to be initiated for each workstation that will be doing insurance billing.** If the updates are not downloaded and registered on each workstation that will be doing insurance billing, then claims generated for those workstations may be denied if they are not updated.

- **Insurance Billing Updates** – The Insurance Billing tab has been updated with an Update button that allows you to download the latest insurance billing components if new components are available. See Figure A1. An Update button is available in both the Manual Billing and Automatic Billing sub-tabs and will become highlighted to alert you when new billing components are available.

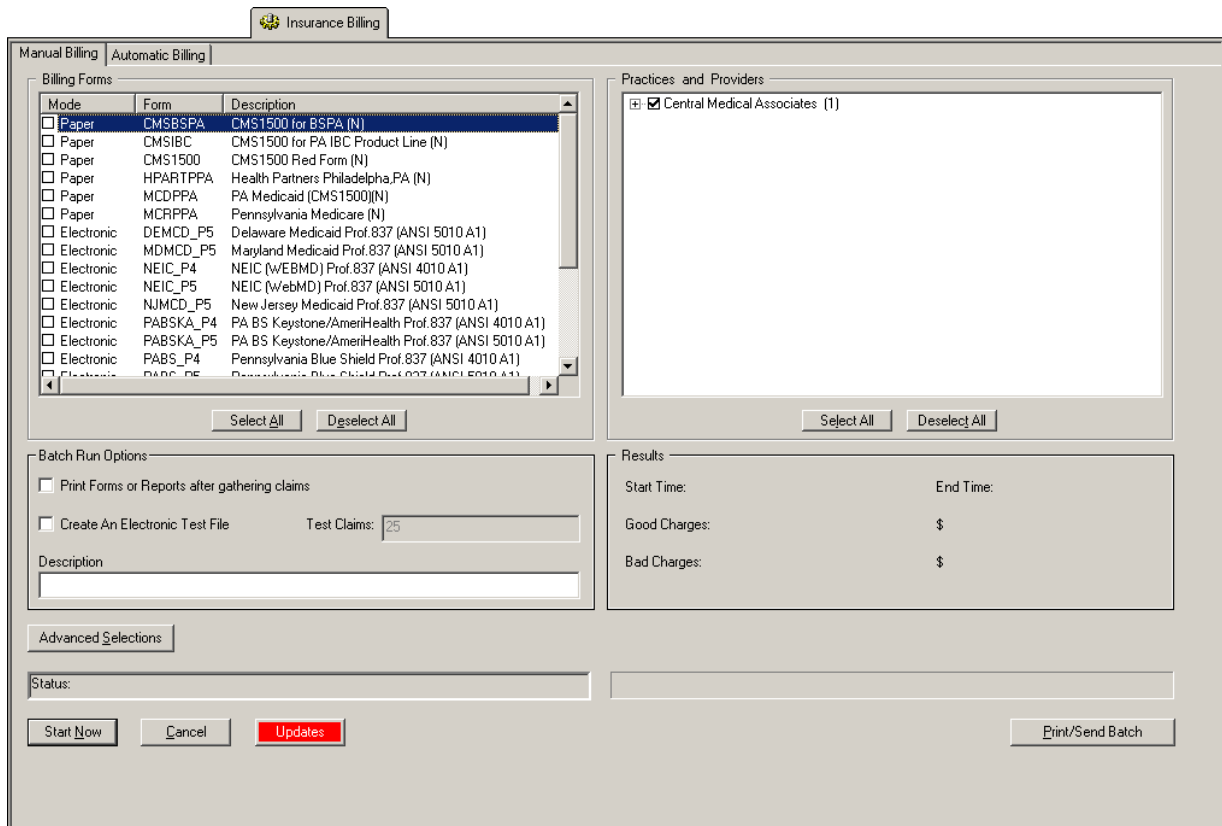


Figure A1 – Insurance Billing – Manual Billing

Once the download is initiated by clicking the **Updates** button, another dialog will appear confirming that you want to download and install the latest billing updates. See Figure A2.

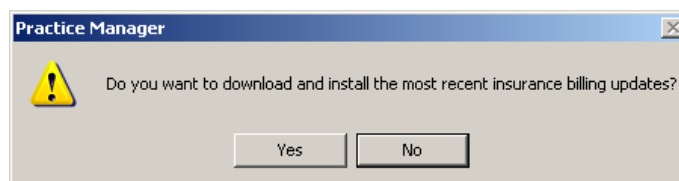


Figure A2 – Insurance Billing Updates Download

Insurance Billing Updates Reminder (continued)

Once the **Yes** button is clicked the insurance billing updates will start to download and the following message will appear in Figure A3. Do note that once the billing updates are initiated by a user, the Updates button will disable for all users and other users who try to initiate the download will receive a message stating that updates have started from another machine. Once the updates have been downloaded you will be prompted to install the updates, as well as to close out of the Practice Manager application to ensure a successful update.

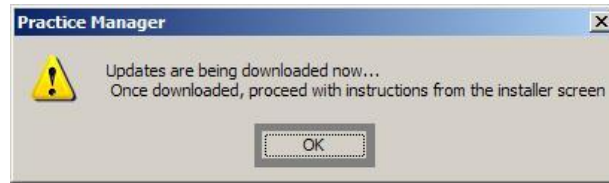


Figure A3— Insurance Billing Updates Download Confirmation

Once the updates have been successfully downloaded and installed, log back into Practice Manager and be sure to register the Billing Component Manger (Add-Ins > Insurance Billing > Billing Component Manager).

Some icons are from the Silk icon set by Mark James (<http://www.famfamfam.com/>). All rights reserved. Licensed under a Creative Commons Attribution 2.5 License (<http://creativecommons.org/licenses/by/2.5/>).

Some icons are from the Fugue icon set by Yusuke Kamiyamane (<http://p.yusukekamiyamane.com/>). All rights reserved. Licensed under a Creative Commons Attribution 3.0 License (<http://creativecommons.org/licenses/by/3.0/>).