



ChartMaker® Practice Manager Release Notes

ChartMaker® 2016 (fv6.2.6)

Administration

- **Administration – Practice Tables – Provider** – The Taxonomy Codes dialog (accessed via the Taxonomy Code field lookup button in the Provider dialog) has been updated with the taxonomy codes and definitions based on the October 2017 Code Set (National Uniform Claim Committee). See Figure 1.
- **Administration – Practice Tables – Referral** – The Taxonomy Codes dialog (accessed via the Taxonomy Code field lookup button in the Referral and Other Providers dialog) has been updated with the taxonomy codes and definitions based on the October 2017 Code Set (National Uniform Claim Committee). See Figure 1.

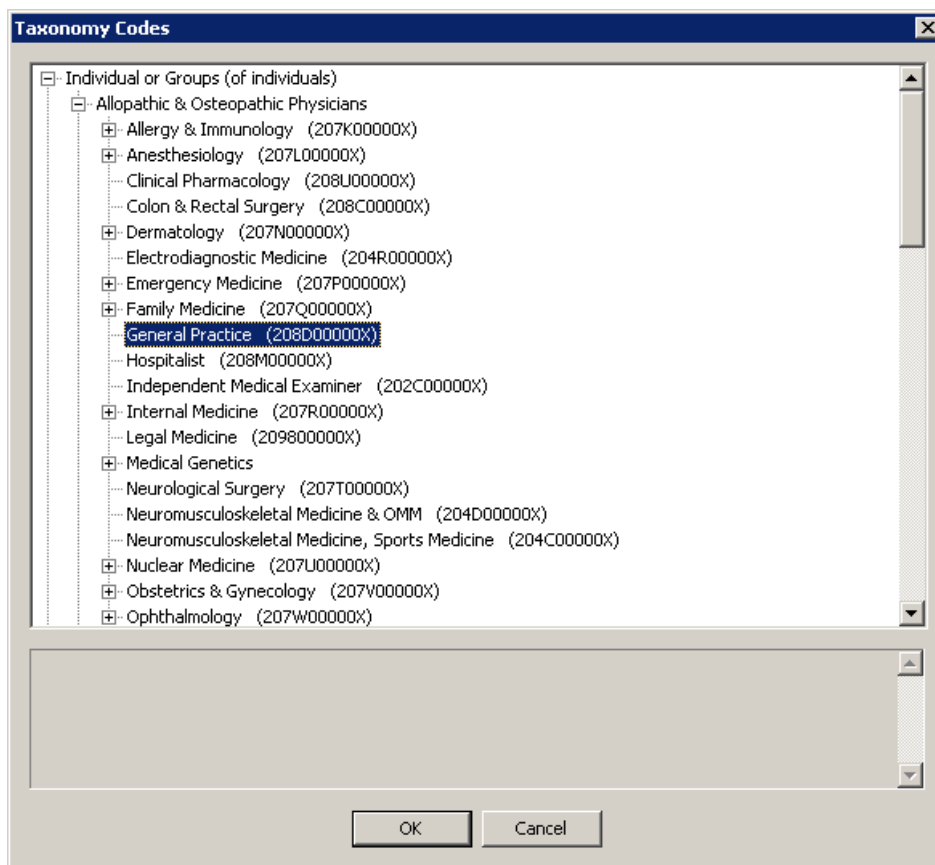


Figure 1 – Taxonomy Codes

- **Administration – Preferences – System Level Preferences – Appointments** – The system has been updated so that you cannot enter a **Schedule End Time** that is before the **Schedule Start Time** in the Appointment Preferences section of the Appointment tab. If a Schedule End Time is entered that is before the Schedule Start Time a warning message will be generated and you will not be able to continue until the times have been corrected.
- **Administration – Preferences – Practice Level Preferences – Appointments** – The system has been updated so that you cannot enter a **Schedule End Time** that is before the **Schedule Start Time** in the Appointment Preferences section of the Appointment tab. If a Schedule End Time is entered that is before the Schedule Start Time a warning message will be generated and you will not be able to continue until the times have been corrected.

Reports

Managed Care Reports

- **Payment Analysis → Insurance Comparison Detail** – This report has been updated with an **Allowed %** column that will display the percentage of the Allowed Amount of the charge Amount (Allowed Amount/[charge] Amount). When exporting the report to Excel, the Allowed % will be a separate column, allowing you to sort on that column to easily identify charges for review.

Some icons are from the Silk icon set by Mark James (<http://www.famfamfam.com/>). All rights reserved. Licensed under a Creative Commons Attribution 2.5 License (<http://creativecommons.org/licenses/by/2.5/>).

Some icons are from the Fugue icon set by Yusuke Kamiyamane (<http://p.yusukekamiyamane.com/>). All rights reserved. Licensed under a Creative Commons Attribution 3.0 License (<http://creativecommons.org/licenses/by/3.0/>).