



ChartMaker® Practice Manager Release Notes

ChartMaker® 2018 (fv6.2.9)

General

- **ChartMaker Medical Suite Upgrade Installation** – The current ChartMaker® Medical Suite upgrade (ChartMaker® 2018 fv6.2.9) requires Microsoft SQL 2008 R2 SP3 to be installed on your system prior to performing the upgrade installation. To allow you to automatically upgrade to SP3, the ChartMaker Medical Suite Installer will check to see if Microsoft SQL 2008 R2 SP3 is already installed on your system. If it is **not** already installed on your system, after the ChartMaker Medical Suite: Pre-Installation screen you will be routed to a ChartMaker Medical Suite: Requirements page that outlines that Microsoft SQL 2008 R2 SP3 needs to be installed before updating or installing the ChartMaker Medical Suite upgrade. See Figure 1.

To complete the installation, click the **Finish** button in the Requirements page. Microsoft SQL 2008 R2 SP3 will then be installed **and will be require a reboot of your system when finished. After the Microsoft SQL 2008 R2 SP3 installation has been completed, and your system has been rebooted, you must then restart the ChartMaker® Medical Suite upgrade installation.**

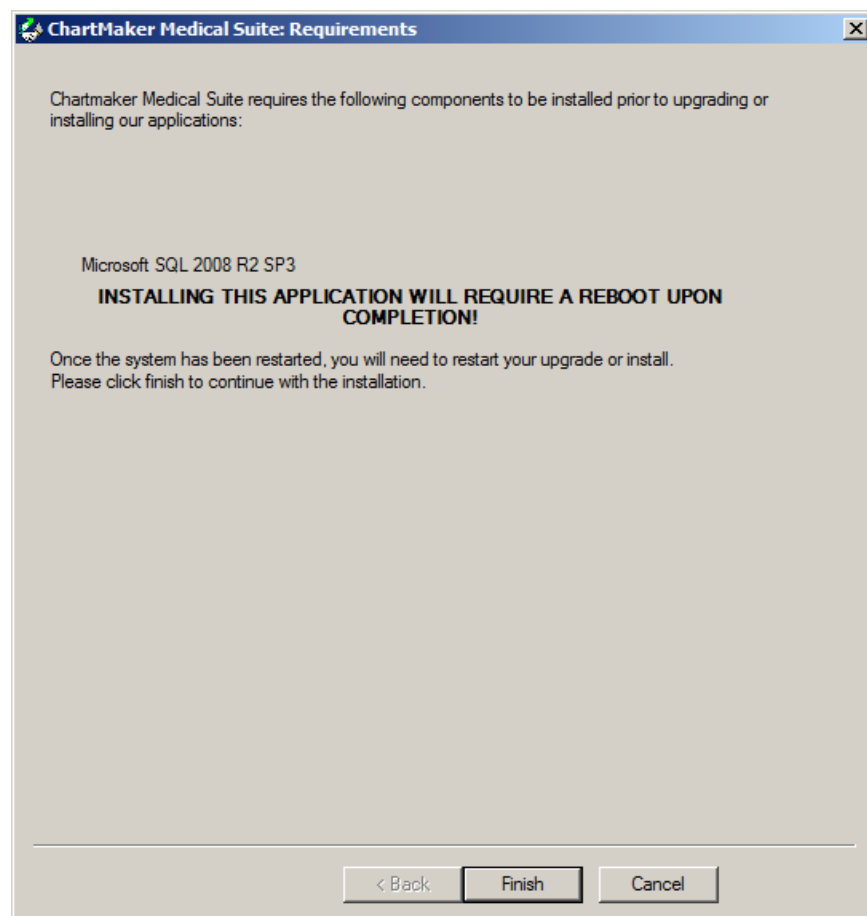


Figure 1 – ChartMaker Medical Suite: Requirements

General (continued)

- **System Login** – The system has been updated to check and monitor the ChartMaker® Health Portal connectivity status for the ChartMaker Medical Suite. When logging into Clinical or Practice Manager, if connectivity with the Health Portal has been broken for a 24-hour period, the system will generate a warning notifying you of this connection problem and provide you with a reference error code. See Figure 2. If you receive this message after upgrading, it is important to contact Software Support so they can assist you in rectifying the problem. After you have clicked the **OK** button, you will still have access to the program, but any functionality requiring the Health Portal will be limited until the connectivity is repaired.

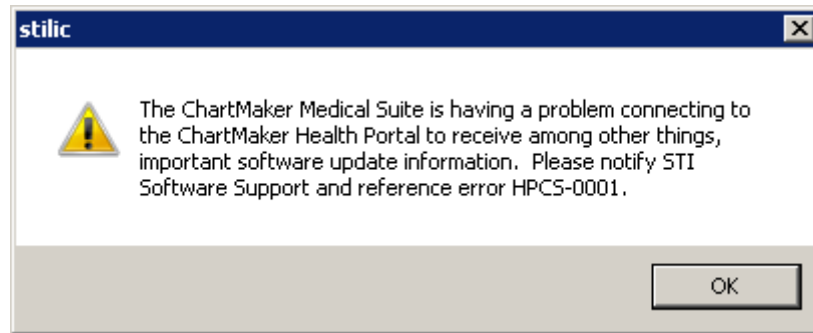


Figure 2 – Health Portal Connectivity Warning

Some icons are from the Silk icon set by Mark James (<http://www.famfamfam.com/>). All rights reserved. Licensed under a Creative Commons Attribution 2.5 License (<http://creativecommons.org/licenses/by/2.5/>).

Some icons are from the Fugue icon set by Yusuke Kamiyamane (<http://p.yusukekamiyamane.com/>). All rights reserved. Licensed under a Creative Commons Attribution 3.0 License (<http://creativecommons.org/licenses/by/3.0/>).
